

# TECHNOLOGY TRANSFER AWARDS

Each year, the Technology Transfer Office recognizes distinguished faculty who have made research contributions that have led to the development of innovative commercial products.

## 2020 Award Recipients



### Kent L. Gee

Kent L. Gee is an associate professor of physics and currently serves as the chair of the Physics and Astronomy Department. His primary research emphasis is the characterization of high-amplitude noise sources and fields through data analysis and imaging methods.



### Scott D. Sommerfeldt

Scott D. Sommerfeldt is a physics professor and has served as chair of the Physics and Astronomy Department and as dean of the College of Physical and Mathematical Sciences. His primary research emphasis is active and passive noise control and energy-based acoustics.



### Scott Thomson

Scott Thomson is a professor of mechanical engineering. His primary research emphases are engineering measurement systems, computational fluid dynamics, and experimental fluids, with a focus on systems in nature in which fluid motion and structural elasticity are coupled.

# ABOUT TTO

BYU Technology Transfer protects and commercializes faculty-led inventions from Brigham Young University.



**Mike Alder, Director**  
Life Sciences Licensing  
(801)-422-3049



**Dave Brown**  
Software Licensing  
(801)-422-4866



**Spencer Rogers**  
Engineering Licensing  
(801)-422-3676

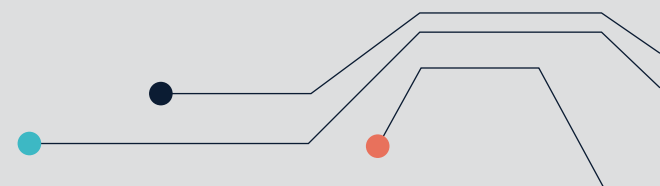


**David Campbell**  
Controller  
(801)-422-9240



**Jennifer Thomas**  
Paralegal, Office Manager  
(801)-422-6266

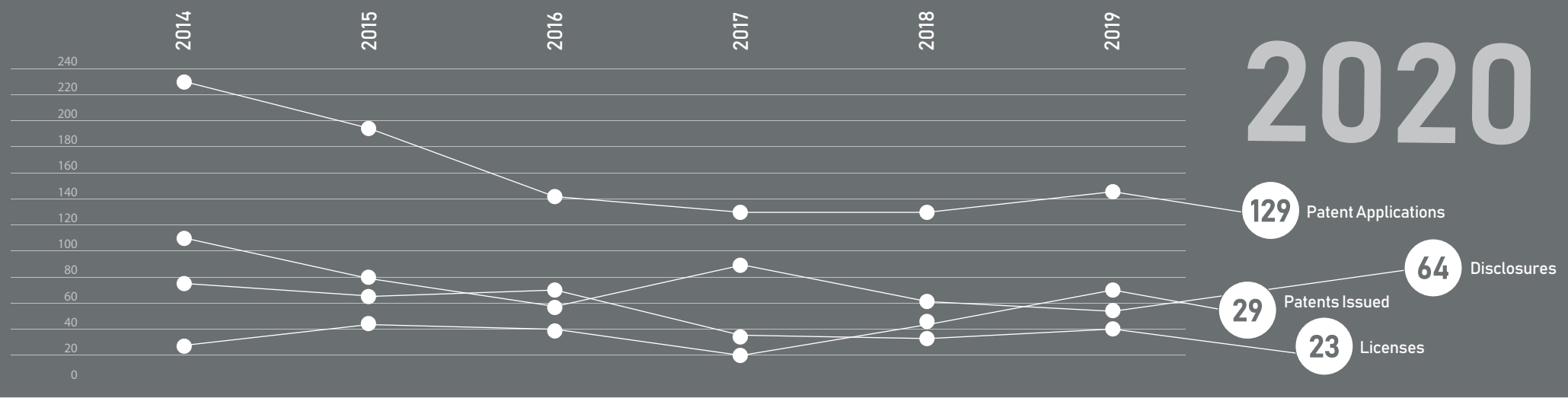
BYU Technology Transfer  
3760 HBLL  
801.422.6266  
[byutto@byu.edu](mailto:byutto@byu.edu)  
[techtransfer.byu.edu](http://techtransfer.byu.edu)



# ANNUAL REPORT 2020

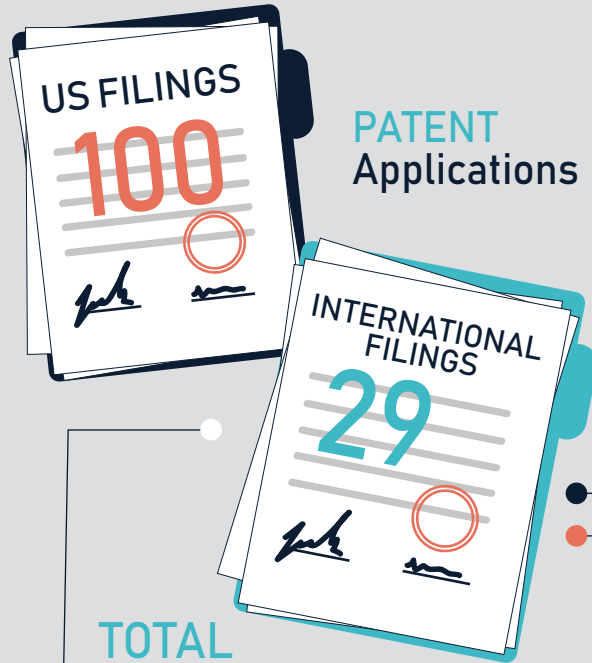
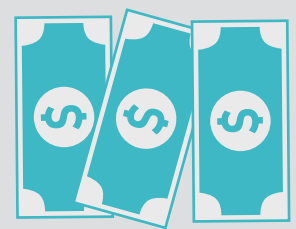
**BYU Technology Transfer**

# 2020



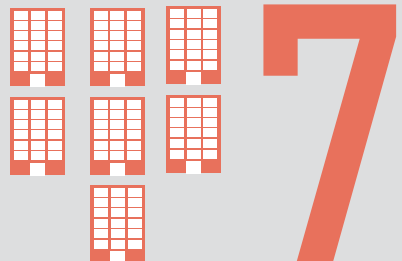
## STATS AND FIGURES FOR 2020

\$ 2,206,183 2020  
 1,944,029 2019  
**ROYALTIES**



**PATENT Applications**

**TOTAL Start-Up Companies**



**COUNTRIES**

Include

- Australia
- Brazil
- Canada
- China
- France
- Germany
- Japan
- Italy
- South Korea

